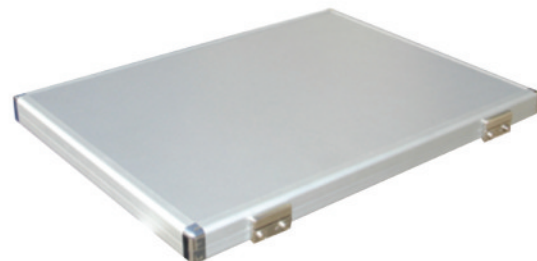




#### Description >>>

Item No.: JXBC-001  
Smooth PVC panel surrounded with round aluminum frame.  
Cr-plated ABS handle, 2 metal latches, 8 Cr-plated ABS corners, and 2 hinges.  
Document pocket in the top lid, fabric covers both lid and bottom inside the case.  
Dimension: 36 x 30 x 5.5 cm, or made to order.  
Packing: 10 pcs / CTN



#### Description >>>

Item No.: JXBC-002  
Smooth aluminum panel surrounded with integrative aluminum frame.  
Special designed locks, 8 Cr-plated ABS corners, and 2 hinges.  
Fabric covers both lid and bottom inside the case.  
Dimension: 40 x 30 x 2.8 cm, or made to order.  
Packing: 20 pcs / CTN



#### Description >>>

Item No.: JXBC-003  
Diamond embossed aluminum panel surrounded with round aluminum frame.  
Strong black ABS handle, 2 combination locks for privacy, 8 black ABS corners, and 2 hinges.  
Document pocket in top lid, fabric covers both lid and bottom inside the case.  
Dimension: 45 x 32 x 12 cm, or made to order.  
Packing: 5 pcs / CTN



#### Description >>>

Item No.: JXBC-004  
Stripe embossed aluminum panel surrounded with round aluminum frame.  
Strong black ABS handle, 2 metal latches with keyhole, 8 black ABS corners, and 2 hinges.  
Document pocket in top lid, fabric covers both lid and bottom inside the case.  
Dimension: 45 x 32 x 12 cm, or made to order.  
Packing: 5 pcs / CTN



#### Description >>>

Item No.: JXBC-005  
Smooth aluminum panel surrounded with special designed integrative aluminum frame.  
Cr-plated ABS handle, 2 U-shape metal latches with keyhole, 8 Cr-plated corners, and 2 hinges.  
Document pocket in top lid, fabric covers both lid and bottom inside the case.  
Dimension: 37 x 28.5 x 6.5 cm, or made to order.  
Packing: 10 pcs / CTN



#### Description >>>

Item No.: JXBC-006  
Smooth aluminum panel surrounded with integrative aluminum frame.  
Special designed lock, 8 Cr-plated ABS corners, and 2 hinges.  
Document pocket in top lid, fabric covers both lid and bottom inside the case.  
Dimension: 23 x 31 x 6.4 cm, or made to order.  
Packing: 10 pcs / CTN



#### Description >>>

Item No.: JXBC-007  
Diamond embossed PVC panel surrounded with round aluminum frame.  
Cr-plated ABS handle, 2 metal latches, 8 Cr-plated ABS corners, and 2 hinges.  
Document pocket in top lid, fabric covers both lid and bottom inside the case.  
Dimension: 58 x 30 x 7.5 cm, or made to order.  
Packing: 10 pcs / CTN



#### Description >>>

Item No.: JXBC-008  
Stripe embossed PVC panel surrounded with round aluminum frame.  
Cr-plated ABS handle, 2 metal latches, 8 black ABS corners, and 2 hinges.  
Document pocket in top lid, fabric covers both lid and bottom inside the case.  
Dimension: 58 x 30 x 7.5 cm, or made to order.  
Packing: 10 pcs / CTN





#### Description >>>

Item No.: JXBC-009  
Diamond embossed aluminum panel surrounded with integrate aluminum frame.  
Cr-plated ABS handle, 2 metal latches, 8 black ABS corners, and 2 hinges.  
Fabric covers both lid and bottom inside the case.  
Dimension: 43 x 36 x 6.4 cm, or made to order.  
Packing: 10 pcs / CTN

#### Description >>>

Item No.: JXBC-010  
Black stripe embossed PVC panel surrounded with round aluminum frame.  
Black ABS handle, 2 U-shape metal latches with keyhole, 8 black ABS corners, and 2 hinges.  
Document pocket in top lid, fabric covers both lid and bottom inside the case.  
Dimension: 44 x 32 x 8 cm, or made to order.  
Packing: 8 pcs / CTN



#### Description >>>

Item No.: JXBC-013  
Smooth aluminum panel surrounded with round and square aluminum frame.  
Strong black ABS handle, 2 Cr-plated metal latches with keyhole, 8 Cr-plated metal corners, and 2 hinges.  
Document pocket in top lid, fabric covers both lid and bottom inside the case.  
Dimension: 42 x 31 x 11 cm, or made to order.  
Packing: 5 pcs / CTN

#### Description >>>

Item No.: JXBC-014  
Diamond embossed aluminum panel surrounded with round aluminum frame.  
Black ABS handle, 2 combination locks for privacy, 8 Cr-plated ABS corners, and 2 hinges.  
Document pocket in top lid, fabric covers both lid and bottom inside the case.  
Dimension: 42 x 31 x 11 cm, or made to order.  
Packing: 5 pcs / CTN



#### Description >>>

Item No.: JXBC-011  
Diamond embossed aluminum panel surrounded with round aluminum frame.  
Black ABS handle, 2 metal latches with keyhole, 8 black ABS corners, and 2 hinges.  
Document pocket in top lid, fabric covers both lid and bottom inside the case.  
Dimension: 44 x 32 x 8 cm, or made to order.  
Packing: 8 pcs / CTN

#### Description >>>

Item No.: JXBC-012  
Special designed for ARMY use.  
Diamond embossed aluminum panel surrounded with rhombic integrative aluminum frame.  
Strong black ABS handle, 2 U-shape metal latches with keyhole, 8 black ABS corners, and 2 hinges.  
Document pocket in top lid, fabric covers both lid and bottom inside the case.  
Dimension: 42 x 28 x 6 cm, or made to order.  
Packing: 10 pcs / CTN



#### Description >>>

Item No.: JXBC-015  
Diamond embossed aluminum panel surrounded with round and square aluminum frame.  
Strong Zinc-alloy handle, 2 combination locks for privacy, 8 Cr-plated metal corners, and 2 hinges.  
Document pocket in top lid, fabric covers both lid and bottom inside the case.  
Dimension: 42 x 31 x 11 cm, or made to order.  
Packing: 5 pcs / CTN

#### Description >>>

Item No.: JXBC-016  
Smooth aluminum panel surrounded with round aluminum frame.  
Strong Zinc-alloy handle, 2 combination locks for privacy, 8 Cr-plated ABS corners, and 2 hinges.  
Document pocket in top lid, fabric covers both lid and bottom inside the case.  
Dimension: 42 x 31 x 11 cm, or made to order.  
Packing: 5 pcs / CTN